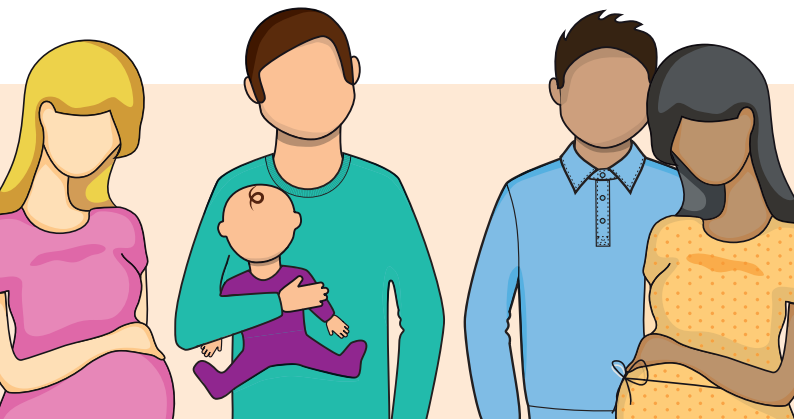
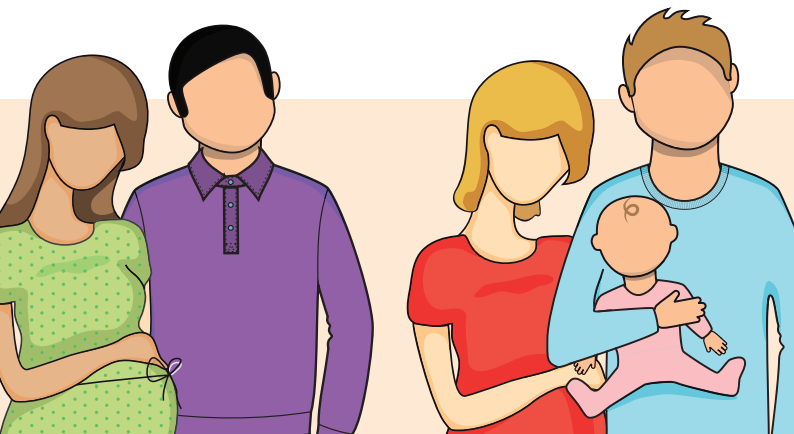


# Positive Choices



Intensive support for young people during pregnancy and early years

The Positive Choices programme will result in evidence based changes to systems strengthening children's social care. The aim is to change and influence surrounding services using the whole family approach – the ambition being to change culture from one of a presumption of failure to one that is constantly seeking success.



t: 01422 392622 or 392681

e: [positivechoices@calderdale.gov.uk](mailto:positivechoices@calderdale.gov.uk)

w: [www.calderdale.gov.uk/positive-choices](http://www.calderdale.gov.uk/positive-choices)

Funded by

