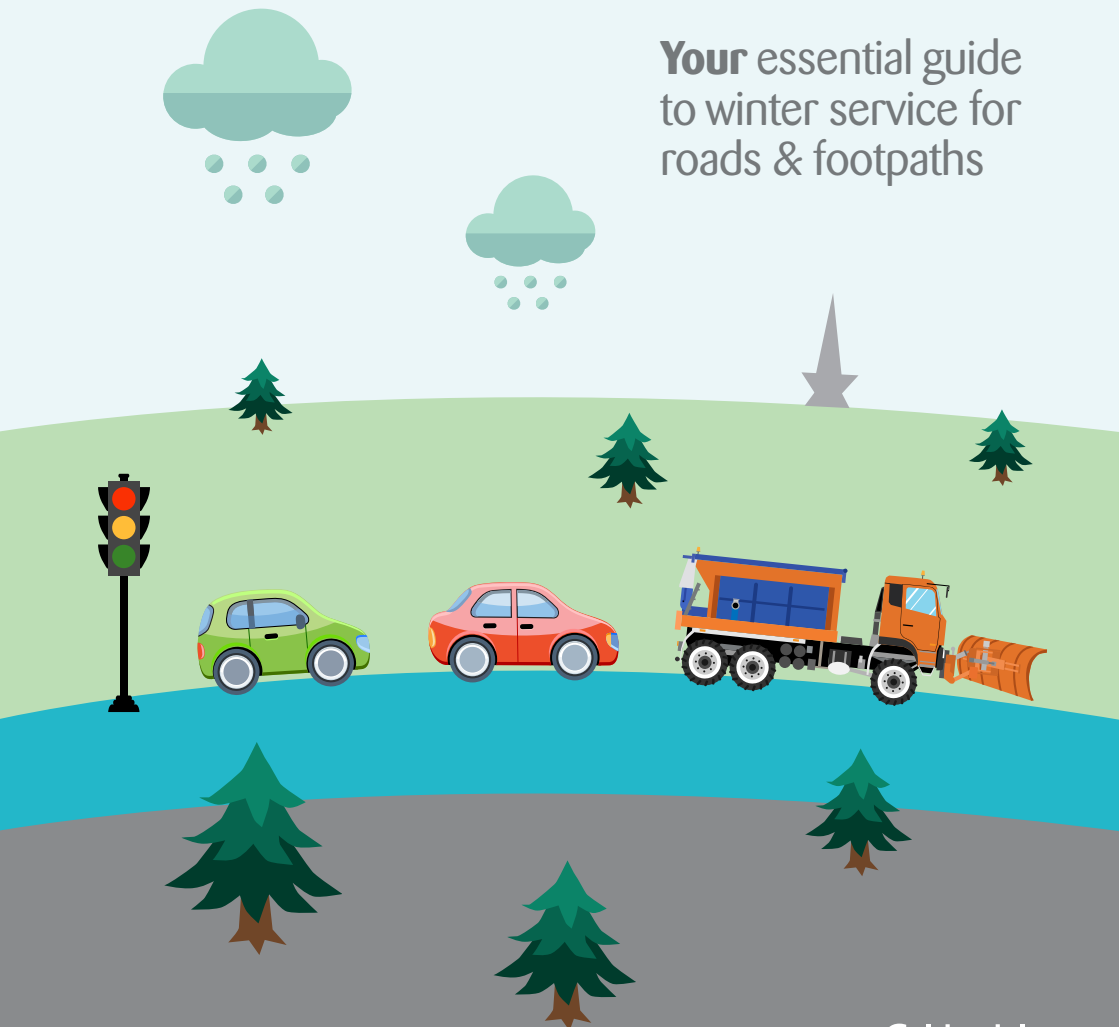


Be Prepared Stay Winter Wise!

on the road

Your essential guide
to winter service for
roads & footpaths



Winter Service

Calderdale Council aims to keep the most important roads and footways in Calderdale safe and as free as possible from wintry hazards. To do this the Council spreads salt to prevent ice. If snow settles ploughs are used to help keep the roads clear.

Because it is impossible for the gritters to spread salt on every road in Calderdale, salt bins/piles are provided at various locations across the borough to assist road users on a self help-basis.

The service starts in October each year and continues 24 hours a day, 7 days a week until 30 April.

These operations are called the Winter Service.

How And When Do We Salt?

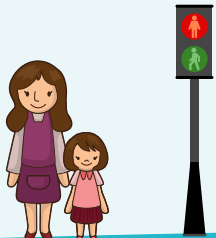
The Council's winter decision makers receive a weather forecast around midday every day and the appropriate action is decided. A fleet of gritters are used to spread salt or plough the roads as necessary.

Why Salt?

Salt lowers the freezing point of water, reducing the risk of ice forming.

Salt alone has very little effect on snow and ice, it requires moving traffic in order to be effective.

We can only plough when it becomes deep enough about 25mm or 1 inch.



What We Are Unable To Do?

We cannot guarantee ice-free roads.

We cannot always avoid spreading salt at peak traffic periods.

We cannot salt all roads or footways as this would be an enormous task.

We cannot provide grit bins on all roads. Over 600 have been provided across Calderdale.

Which Footways Are Salted?

Footways in town and district centres with busy pedestrian areas, shopping areas, precincts, large schools and hospitals etc. are treated during severe weather.



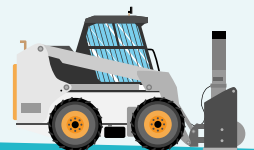
Which Roads Are Salted?

The total road length in Calderdale amounts to 1130 kilometres.

Over 575 km (approx 45%) of roads form our primary salting network which are salted when weather conditions dictate.

These include the main roads, other busy roads, main bus routes as well as access to hospitals and emergency services.

On average it takes 2.5 hours to treat the entire network. However this can increase during periods of snowfall.



Winter Maintenance

How Pedestrians Can Help

Avoid going out unless your journey is essential.

Pedestrians should take extra care during frosty and icy conditions and we would advise wearing the appropriate footwear and clothing.

More information about the roads included in the primary salting network and the location of self-help grit bins can be found on our internet site:

calderdale.gov.uk/winter

How to contact us

W: calderdale.gov.uk/winter

E: customer.first@calderdale.gov.uk

P: Highways & Engineering,
Halifax Town Hall, Crossley Street
Halifax, HX1 1UJ

If you need to report an emergency out of hours please ring: **01422 288000**

Follow us on twitter
@CalderHighways

How Road Users Can Help

There is clearly a responsibility on everyone of us to drive with care especially during winter weather. The best advice to motorists is given in the Highway Code.

- In winter check the local weather forecast for icy or snowy weather. Do not drive in these conditions unless your journey is essential.
- Before you set off you must be able to see, so clear all ice and snow from all your windows.
- Drive with care even if the road has been gritted. Keep well back from the vehicle in front.
- Drive extremely carefully when roads are icy as sudden actions could cause a skid. Drive at a slow speed, particularly on bends.

Winter weather can still make roads treacherous and the key is to drive with due care for the conditions.